



**REGIONSADAPT**

**Sustainable Development Knowledge Platform**

**Partnership Exchange (NYC, July 18<sup>th</sup> 2016).**

**Joan França, Project Manager.**





## Take urgent action to combat climate change and its impacts

### Targets:

- 13.1: Strengthen resilience and adaptive capacity to climate-related hazards and natural disasters in all countries;
- 13.2: Integrate climate change measures into national policies, strategies and planning;
- 13.3: Improve education, awareness-raising and human and institutional capacity on climate change mitigation, adaptation, impact reduction and early warning;
- 13.b: Promote mechanisms for raising capacity for effective climate change-related planning and management in least developed countries and small island developing States, including focusing on women, youth and local and marginalized communities.

- Launched alongside COP 21 (27 founding members + nrg4SD).
- First global initiative for regional governments to take concrete actions, cooperate and report efforts in climate adaptation.
- 3 commitments.

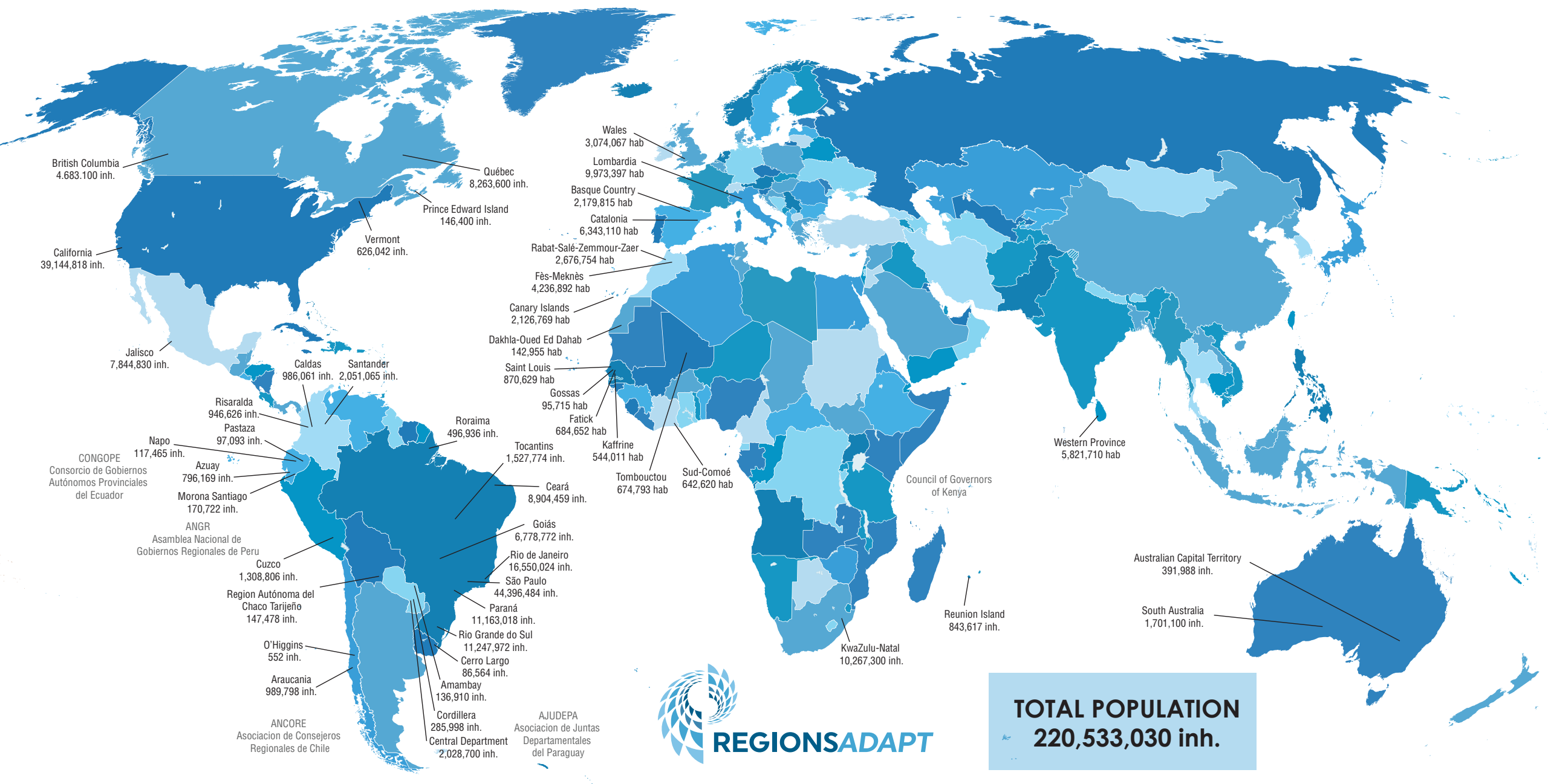


By joining **RegionsAdapt** initiative, governments commit to:

- 1. Adopt a strategic approach to adaptation and prioritize adaptation actions** within two years of joining the initiative;
- 2. Take concrete action on adaptation** in at least one of the key priority areas identified by the regions; and
- 3. Report data on the progress of the adaptation actions** on an annual basis through the risk and adaptation section of CDP's states and regions platform.

## Key priority areas:

- Water resources and management;
- Resilience and disaster risk reduction;
- Agriculture and zootechnics;
- Forestry, protected areas and biodiversity;
- Infrastructure (including transport and the energy sectors) and territorial planning;
- Economic impacts and opportunities;
- Social adaptation and impacts.



British Columbia  
4,683,100 inh.

California  
39,144,818 inh.

Québec  
8,263,600 inh.

Prince Edward Island  
146,400 inh.

Vermont  
626,042 inh.

Wales  
3,074,067 hab

Lombardia  
9,973,397 hab

Basque Country  
2,179,815 hab

Catalonia  
6,343,110 hab

Rabat-Salé-Zemmour-Zaer  
2,676,754 hab

Fès-Meknès  
4,236,892 hab

Canary Islands  
2,126,769 hab

Dakhla-Oued Ed Dahab  
142,955 hab

Saint Louis  
870,629 hab

Gossas  
95,715 hab

Fatick  
684,652 hab

Roraima  
496,936 inh.

Tocantins  
1,527,774 inh.

Ceará  
8,904,459 inh.

Kaffrine  
544,011 hab

Tombouctou  
674,793 hab

Sud-Comoé  
642,620 hab

Western Province  
5,821,710 hab

CONGOPE  
Consortio de Gobiernos  
Autónomos Provinciales  
del Ecuador  
117,465 inh.

Risaralda  
946,626 inh.

Pastaza  
97,093 inh.

Napo  
796,169 inh.

Morona Santiago  
170,722 inh.

ANGR  
Asamblea Nacional de  
Gobiernos Regionales de Peru

Cuzco  
1,308,806 inh.

Region Autónoma del  
Chaco Tarijeño  
147,478 inh.

O'Higgins  
552 inh.

Araucania  
989,798 inh.

ANCORE  
Asociacion de Consejeros  
Regionales de Chile

Amambay  
136,910 inh.

Cordillera  
285,998 inh.

Central Department  
2,028,700 inh.

AJUDEPA  
Asociacion de Juntas  
Departamentales  
del Paraguay

Goiás  
6,778,772 inh.

Rio de Janeiro  
16,550,024 inh.

São Paulo  
44,396,484 inh.

Paraná  
11,163,018 inh.

Rio Grande do Sul  
11,247,972 inh.

Cerro Largo  
86,564 inh.

Council of Governors  
of Kenya

Reunion Island  
843,617 inh.

Australian Capital Territory  
391,988 inh.

South Australia  
1,701,100 inh.



**REGIONSADAPT**

**TOTAL POPULATION**  
**220,533,030 inh.**



[www.nrg4sd.org/regionsadapt](http://www.nrg4sd.org/regionsadapt)

[regionsadapt@nrg4sd.org](mailto:regionsadapt@nrg4sd.org)

**#RegionsAdapt**

